

# TRANSPORTS PLAN

## SWIMMING POOL BUSES

There will be two buses lines from Funchal city to the pool passing the area where are the most hotels.

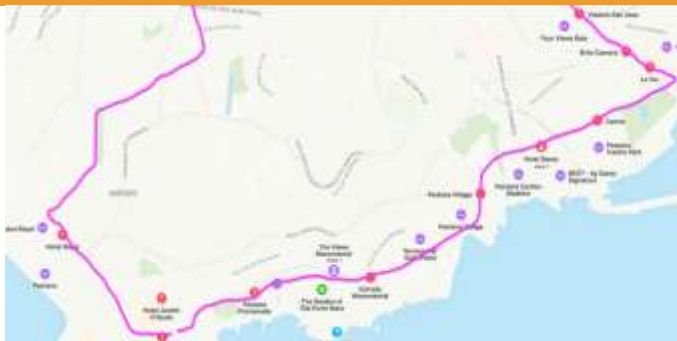
The stops will be the same as use by the public Funchal buses so you can google them for more accuracy.

The schedules are on the way to the final version but there will be a 15' intervals in and out.

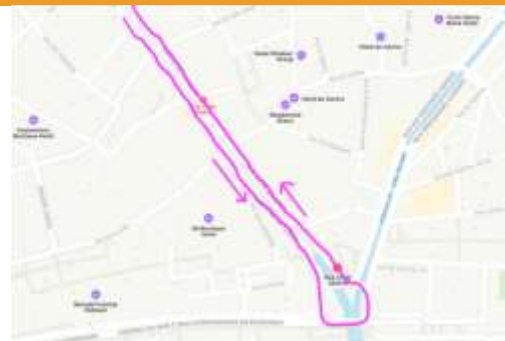


GENERAL MAP

**BUS A STOPS**



**BUS B STOPS**



1	Hotel Royal	1	R 31 Janeiro S
2	Forum Madeira (Ajuda)	2	R 31 Janeiro (Finanças)
3	R Passos Gouveia (Pestana Promenade)		
4	Lido (Estrada Monumental)		
5	Hotel Reid's (Pestana Village)		
6	Hotel Savoy		
7	Hotel Casino Park		
8	R Brito Camara		
9	Entrada São João		

## COMPETITION SCHEDULE

19.11.2023				
	BUS A		BUS B	
	Hotel Royal	Pool	R 31 Janeiro S	Pool
<b>Start</b>	<b>12h45</b>	<b>15h30</b>	<b>12h45</b>	<b>15h30</b>
<b>End</b>	<b>17h00</b>	<b>20h30</b>	<b>17h00</b>	<b>20h30</b>
<b>Interval</b>	<b>15'</b>	<b>15'</b>	<b>15'</b>	<b>15'</b>

20.11.2023				
	BUS A		BUS B	
	Hotel Royal	Pool	R 31 Janeiro S	Pool
<b>Start</b>	<b>14h45</b>	<b>16h30</b>	<b>14h45</b>	<b>16h30</b>
<b>End</b>	<b>16h00</b>	<b>19h00</b>	<b>16h00</b>	<b>19h00</b>
<b>Interval</b>	<b>15'</b>	<b>15'</b>	<b>15'</b>	<b>15'</b>

21.11.2023				
	BUS A		BUS B	
	Hotel Royal	Pool	R 31 Janeiro S	Pool
<b>Start</b>	<b>07h15</b>	<b>10h00</b>	<b>07h15</b>	<b>10h00</b>
<b>End</b>	<b>09h00</b>	<b>12h30</b>	<b>09h00</b>	<b>12h30</b>
<b>Interval</b>	<b>15'</b>	<b>15'</b>	<b>15'</b>	<b>15'</b>

## 22.11.2023

	BUS A		BUS B	
	Hotel Royal	Pool	R 31Janeiro S	Pool
<b>Start</b>	07h15	10h00	07h15	10h00
<b>End</b>	09h00	12h30	09h00	12h30
<b>Interval</b>	15'	15'	15'	15'

## 23.11.2023

	BUS A		BUS B	
	Hotel Royal	Pool	R 31Janeiro S	Pool
<b>Start</b>	07h15	10h00	07h15	10h00
<b>End</b>	09h00	12h30	09h00	12h30
<b>Interval</b>	15'	15'	15'	15'

## 24.11.2023

	BUS A		BUS B	
	Hotel Royal	Pool	R 31Janeiro S	Pool
<b>Start</b>	14h45	17h30	14h45	17h30
<b>End</b>	17h00	19h30	17h00	19h30
<b>Interval</b>	15'	15'	15'	15'

## 25.11.2023

	BUS A		BUS B	
	Hotel Royal	Pool	R 31Janeiro S	Pool
<b>Start</b>	07h15	10h00	07h15	10h00
<b>End</b>	09h00	12h00	09h00	12h00
<b>Interval</b>	15'	15'	15'	15'

## TRAINING SCHEDULE

18.11.2023			
BUS A		BUS B	
Hotel Royal	Pool	R 31Janeiro S	Pool
09h30	11h15	09h30	11h15
10h30	12h15	10h30	12h15
13h30	15h15	13h30	15h15
14h30	16h15	14h30	16h15

18.11.2023 – 20.11.2023 – 24.11.2023			
BUS A		BUS B	
Hotel Royal	Pool	R 31Janeiro S	Pool
09h30	11h15	09h30	11h15
10h30	12h15	10h30	12h15

21.11.2023 – 22.11.2023 – 23.11.2023			
BUS A		BUS B	
Hotel Royal	Pool	R 31Janeiro S	Pool
13h30	15h15	13h30	15h15
14h30	16h15	14h30	16h15

## OPEN WATER BUSES

The venue is at Praia do Lido, so there will be buses start from the east and from the west of Funchal city. Note that there are a few stops used in Line A and B that won't be use, so for that there's a small walk to the using stops.

BUS C			
20.11.2023		24.11.2023	
R 31Janeiro S Hotel Royal	Venue	R 31Janeiro S Hotel Royal	Venue
07h45	11h30	07h45	13h30
08h00	12h00	08h00	14h00
08h30		08h30	